

Grafička priprema i dizajn: Ines Sućeska



IDEJNI PROJEKT UREĐENJA STANA

INVESTITOR: Zorana Kuzmanić - **GRAĐEVINA:** Stan, Naselak 10, Zagreb - **PROJEKTANT:** Gordana Đerić, dipl.ing.arh - **DATUM:** Lipanj, 2014

nauportus

Prilaz baruna Filipovića 28
nauportus@yahoo.com
098 274 263



1

DIZAJN - IDEJNO RJEŠENJE - 3D PRIKAZI

1
DNEVNI BORAVAK

2
KUHINJA

3
DJEČJA SOBA

4
KUPAONA

5
BLAGOVAONA

6
SPAVAĆA SOBA





DNEVNI BORAVAK



DNEVNI BORAVAK

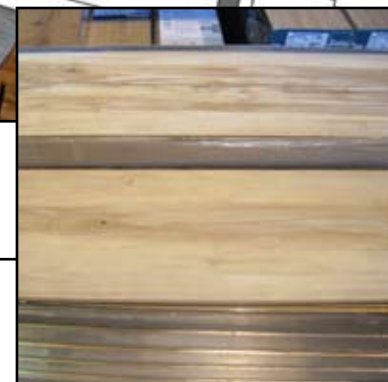


TV ELEMENT



DNEVNI BORAVAK - BLAGOVAONA - KUHINJA

LAMINAT





HODNIK



2

KUHINJA



LIJEVI DIO



DESNI DIO



3

DJEČJA SOBA

FOTO IDEJE



DJEČJA SOBA



4

KUPAONA

TUŠ KADA



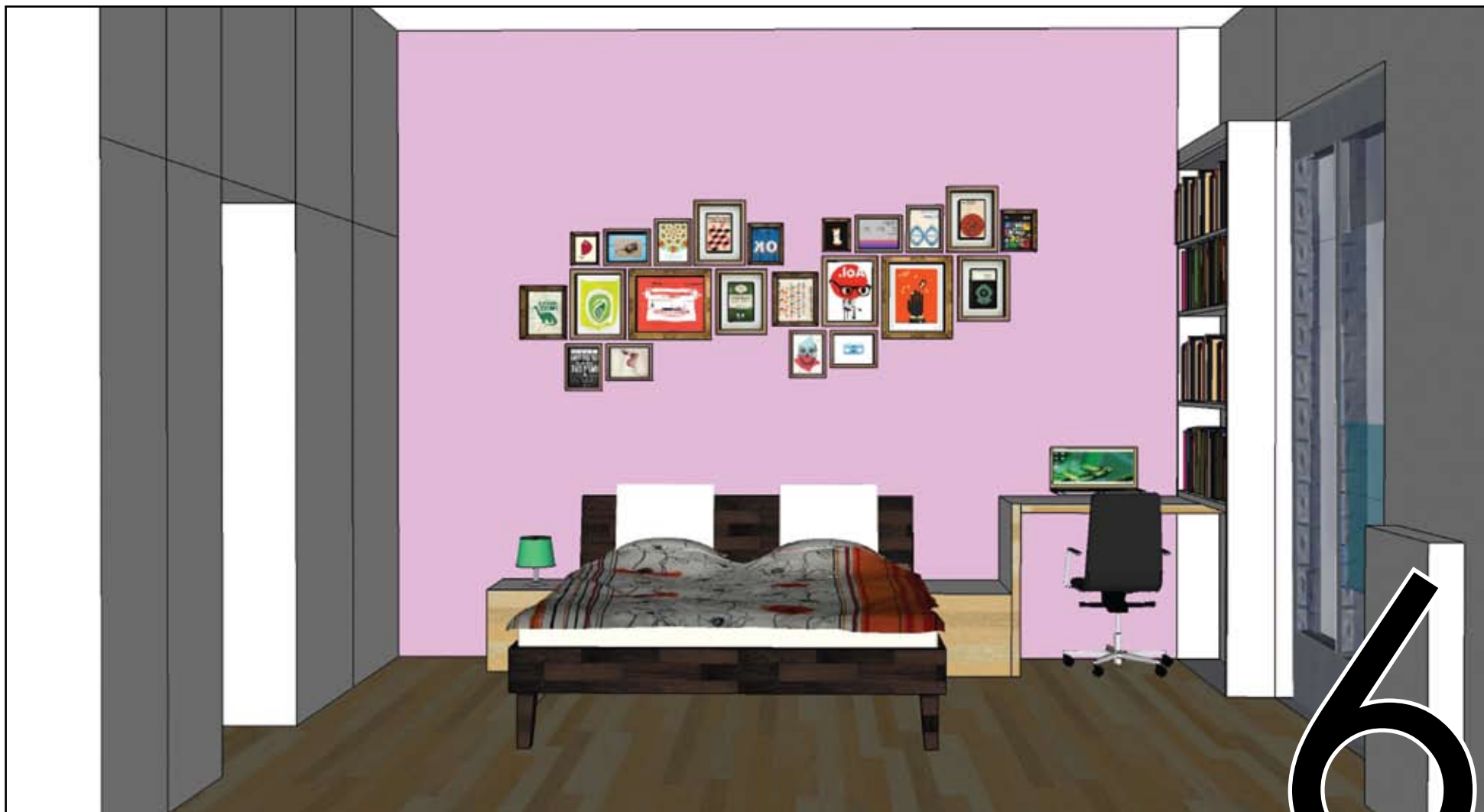
KUPAONA



BLAGOVAONA



BLAGOVAONA



6

SPAVAĆA SOBA

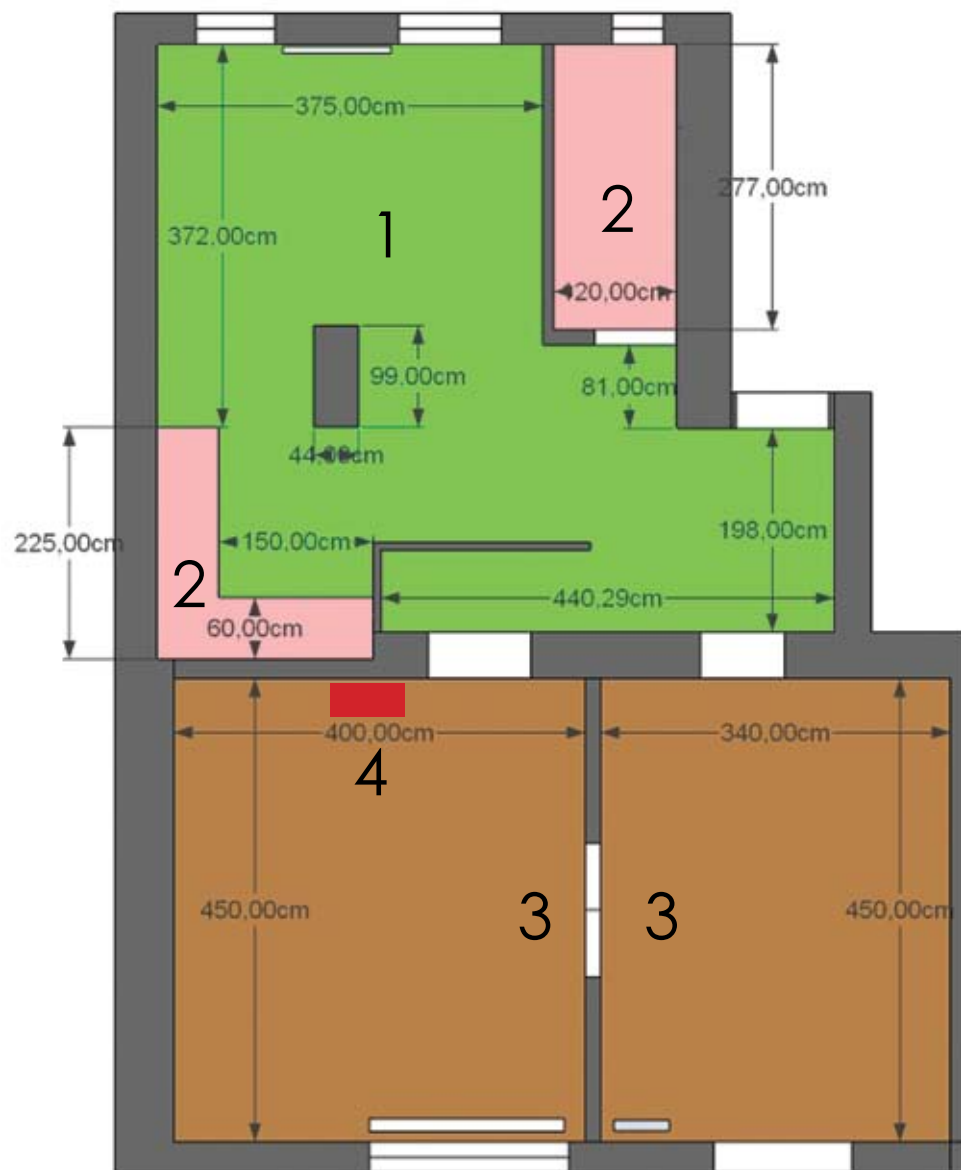
FOTO IDEJA



SPAVAĆA SOBA

PODOVI

NAPOMENA: ostat će pragovi kod ulaza u sobe zbog razlike visina

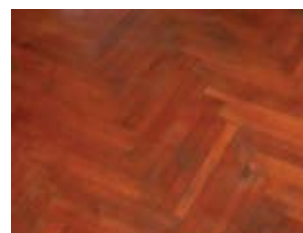


LAMINAT

nivelacija postojećeg poda nakon skidanja laminata i pločica uz prethodno krpanje svih podnih kanala i postavljanje novog laminata



PLOČICE



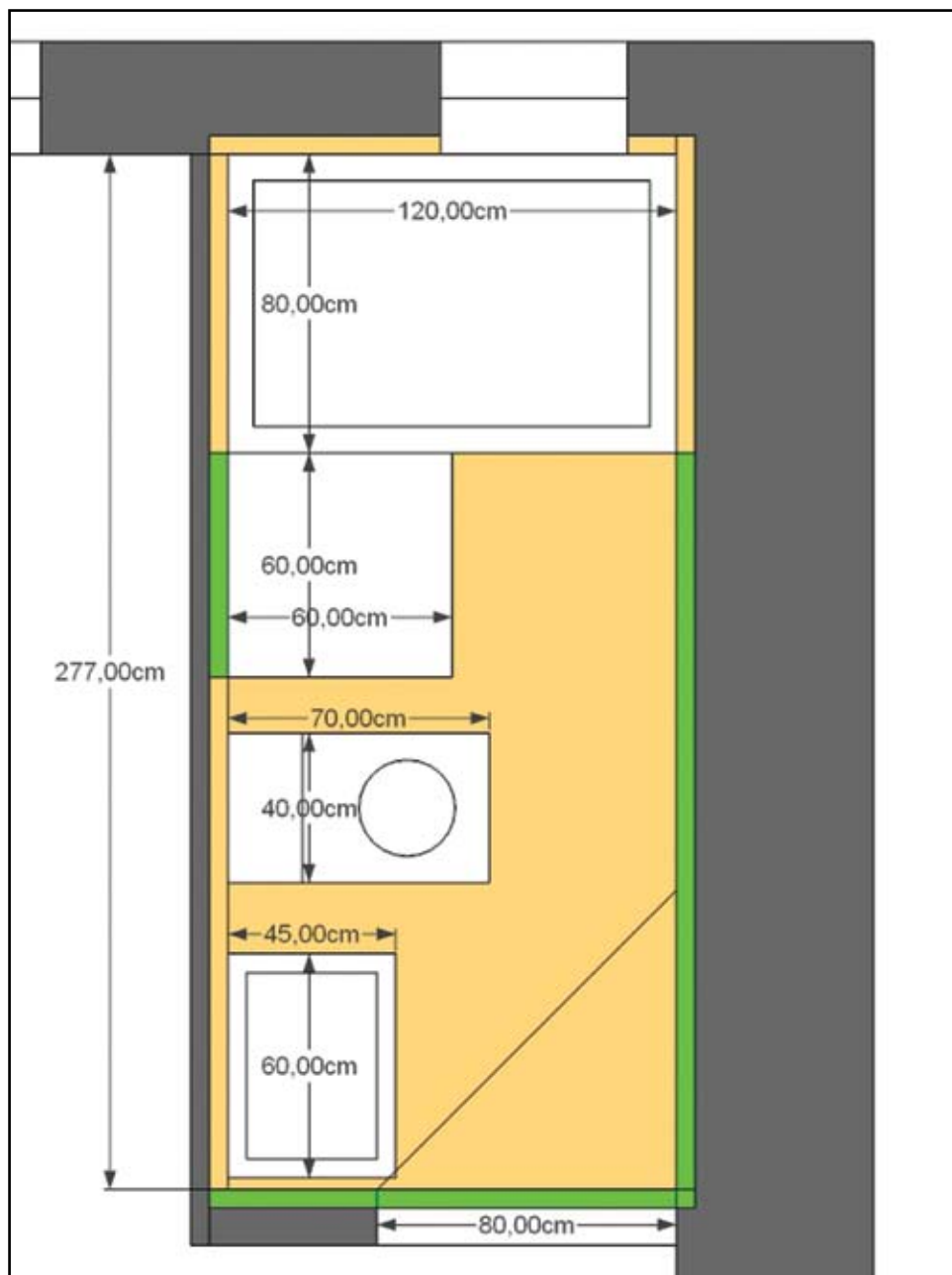
PARKET

ostaje postojeći parket koji se brusi, kita i lakira (samo u sobama)



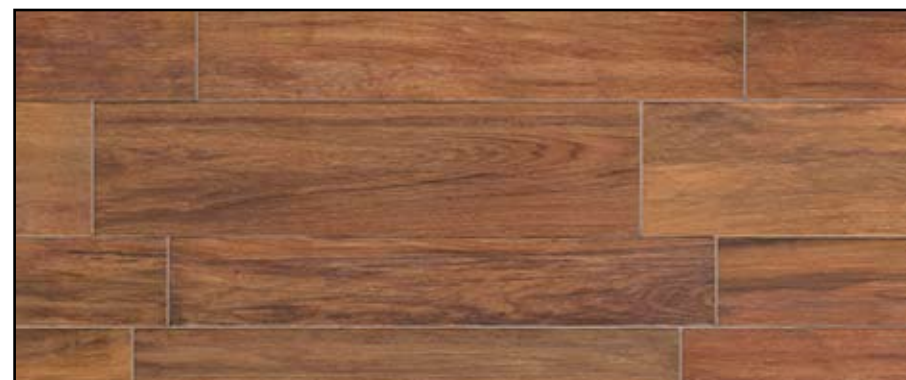
krpanje postojećeg parketa cca 1m²

PLOČICE

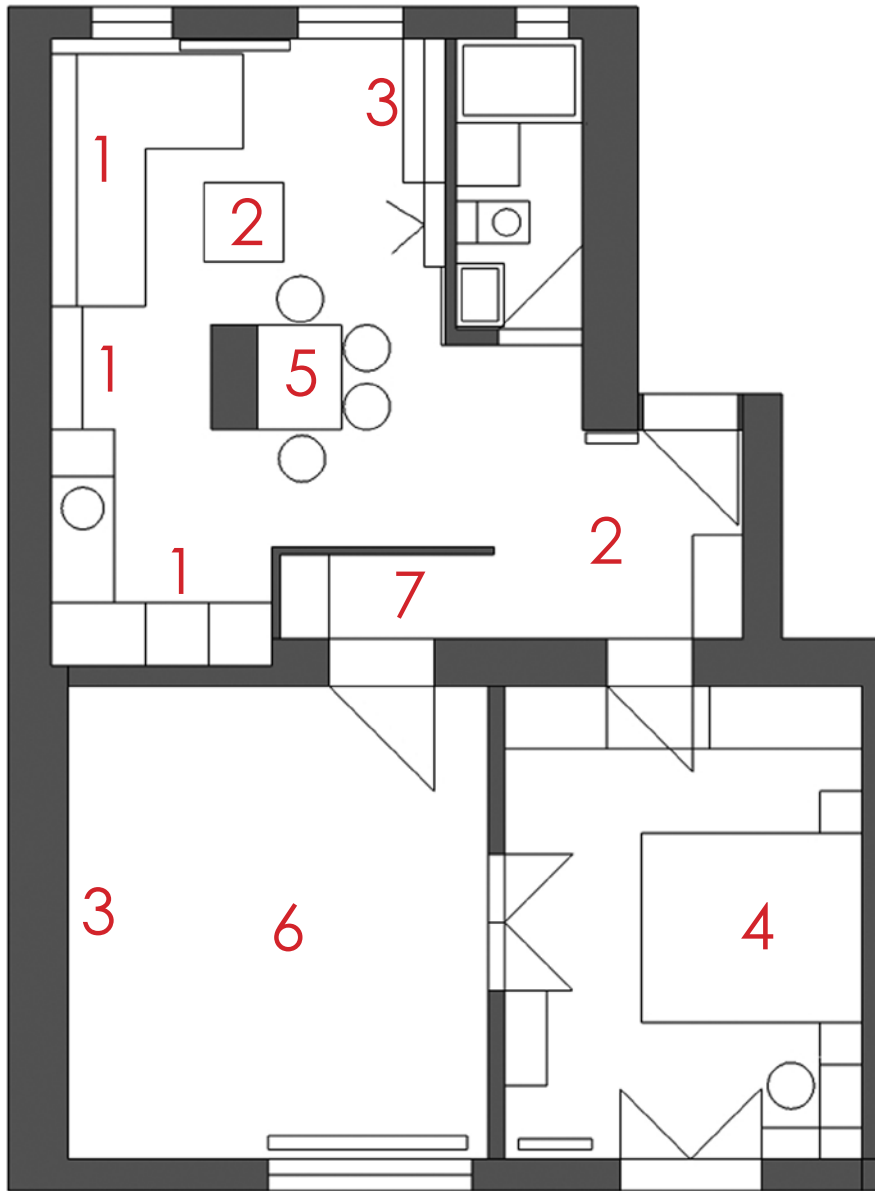


 PLOČICA ZIDNA

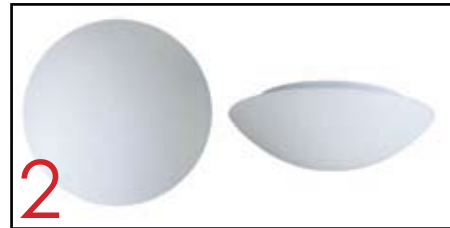
 PLOČICA ZIDNA/PODNA



RASVJETA



1 Irluks, AR111



2 Irluks, 7767 OP SAT



3 Irluks, Flexible LED Strip



4 Irluks, YTX-B010B CS COFFE



5 Philips InStyle ATTILIO 40545 LED pendant light

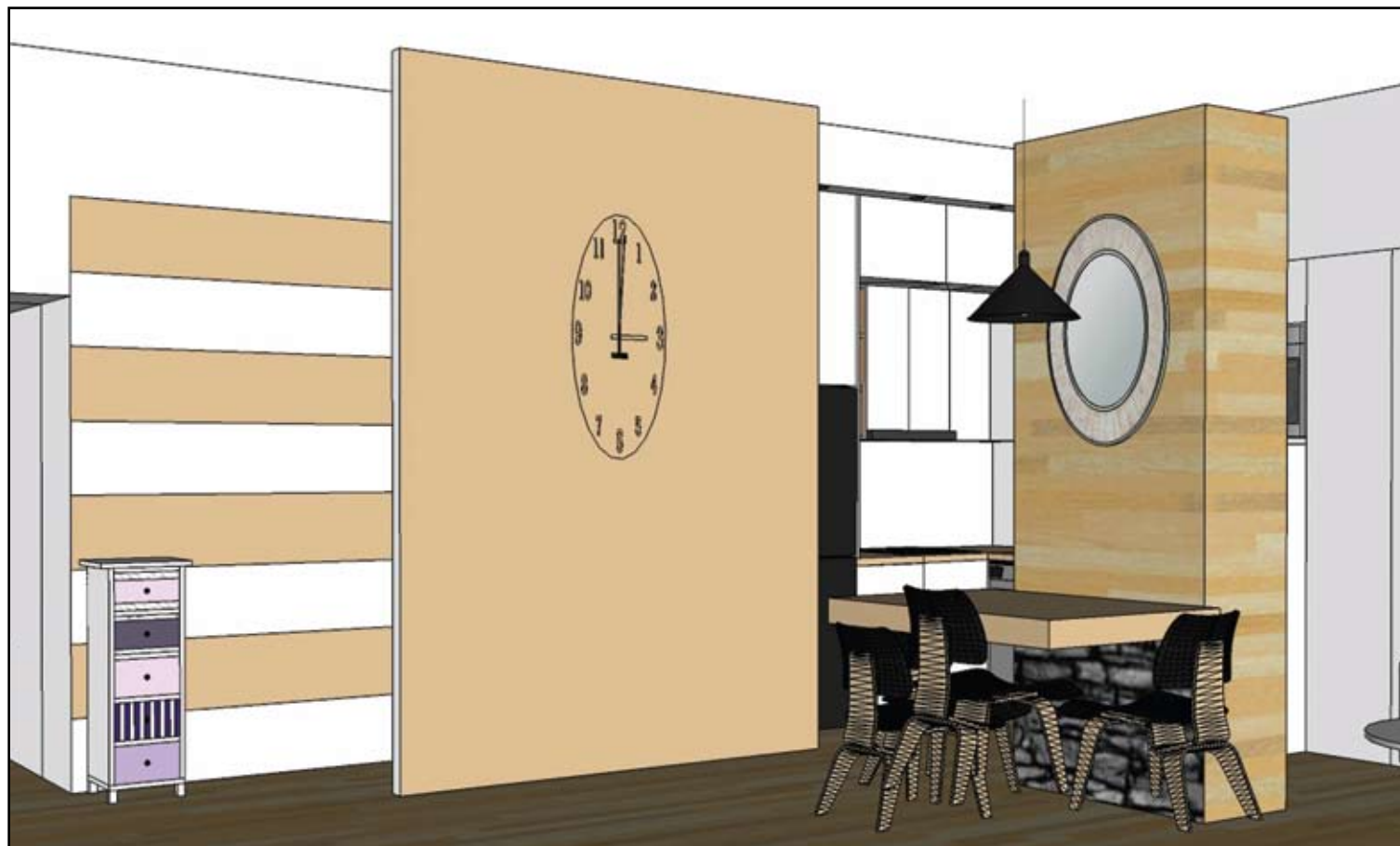


6 Irluks, XL-HZ02



7 Irluks, HBAE-190F-FGSH

ZIDIVI



HODNIK - BLAGOVAONA



SPAVAĆA SOBA



DJEČJA SOBA

ORMARI PO MJERI



TV ELEMENT

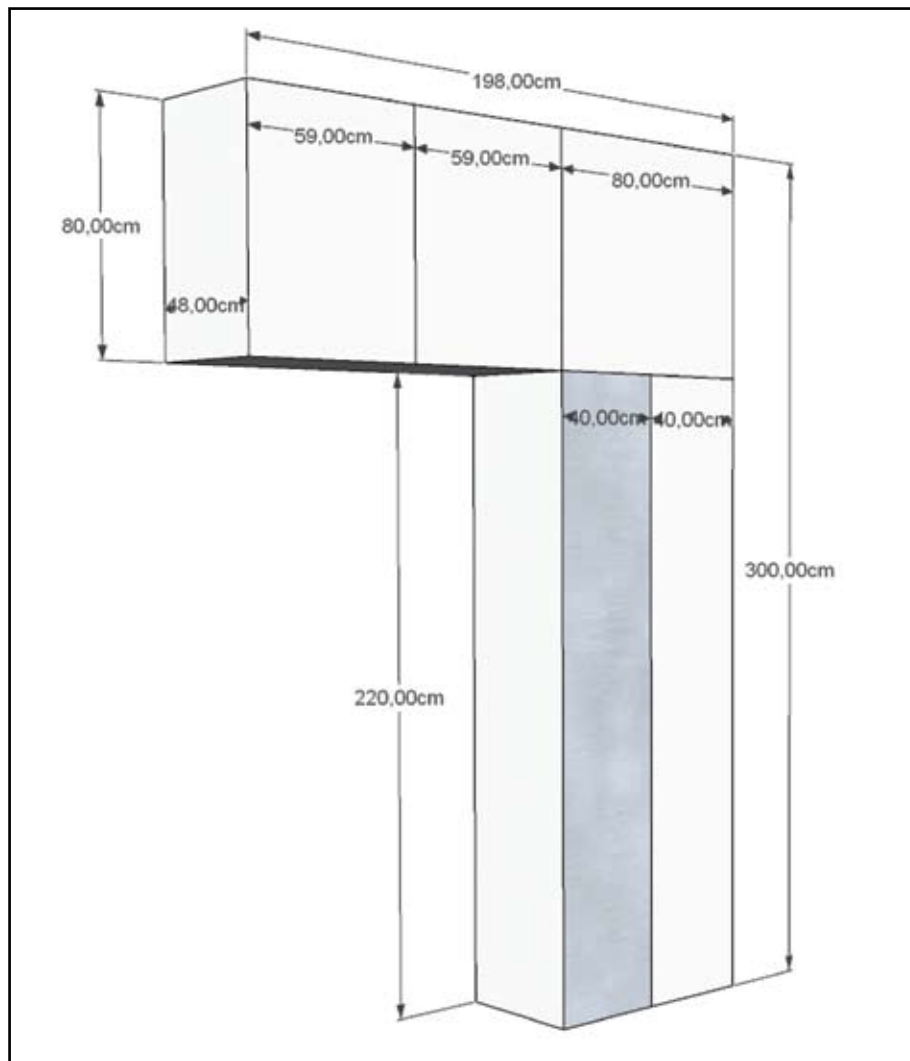
ORMAR - HODNIK 1

ORMAR - HODNIK 2

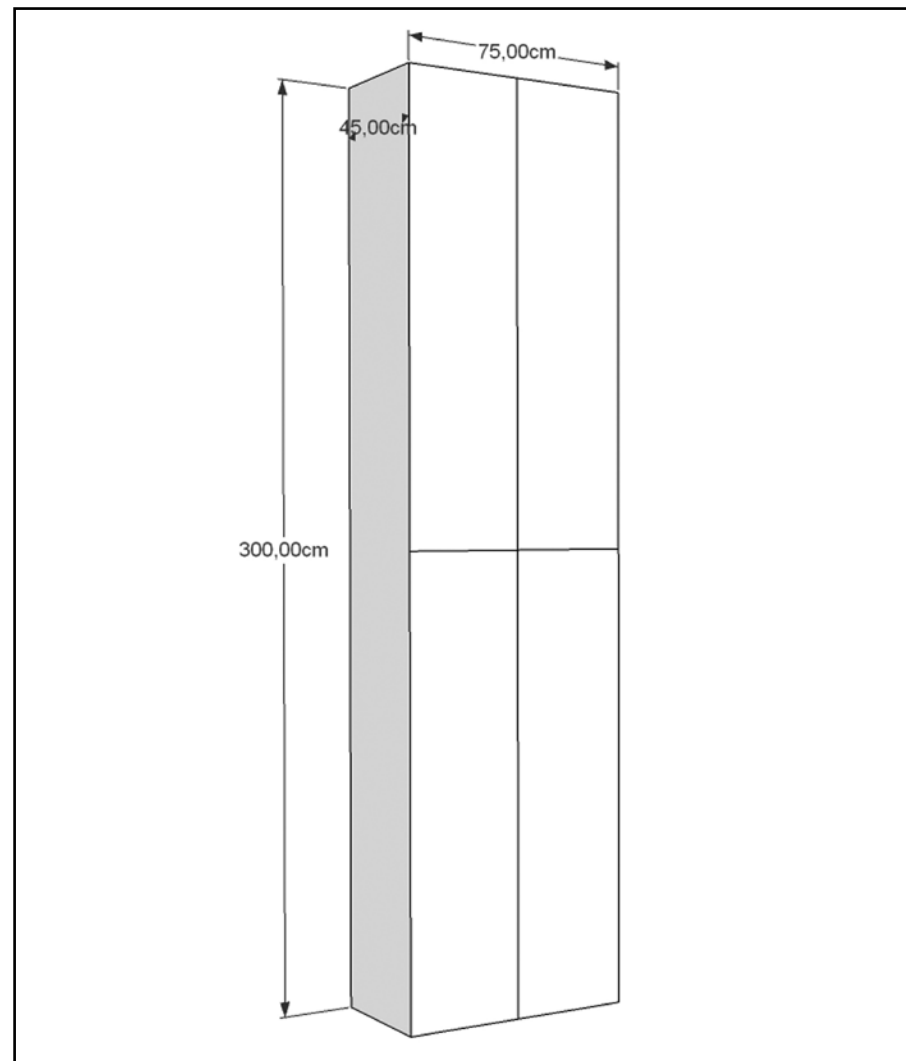
ORMAR - SPAVAĆA SOBA

ORMAR - DJEČJA SOBA

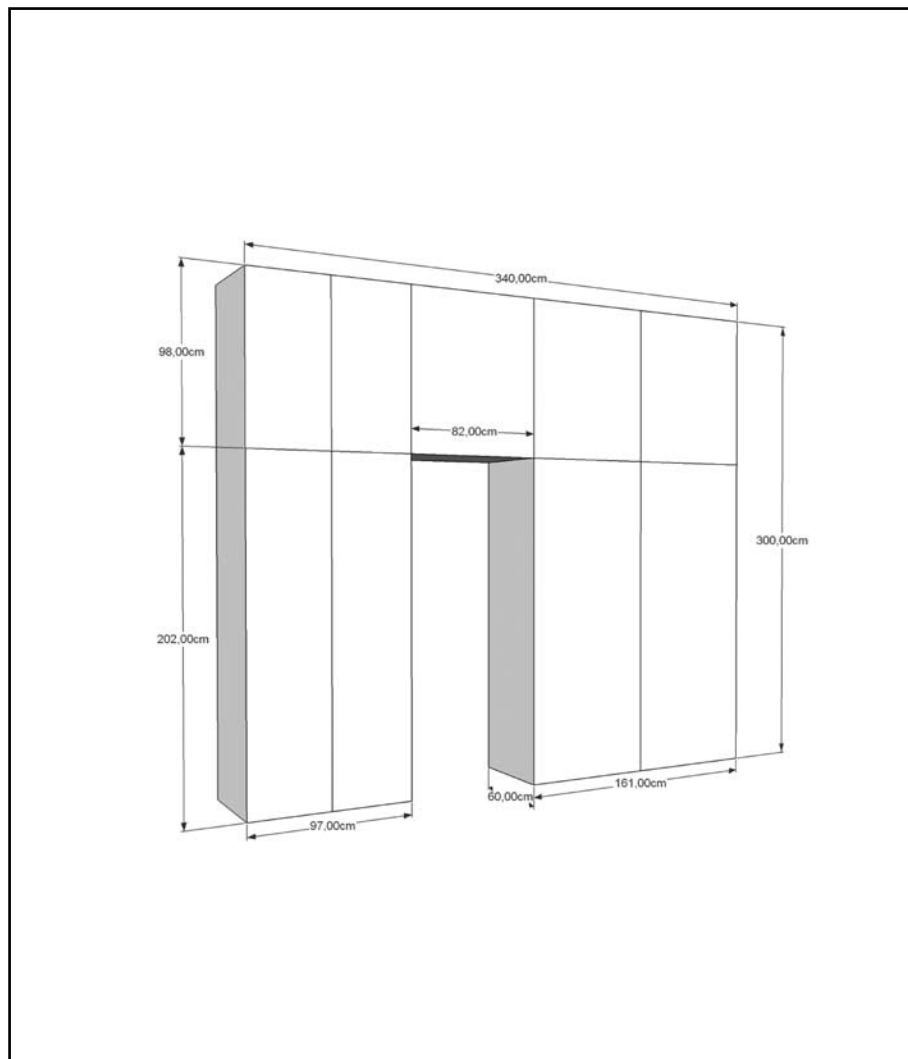
RADNI DIO



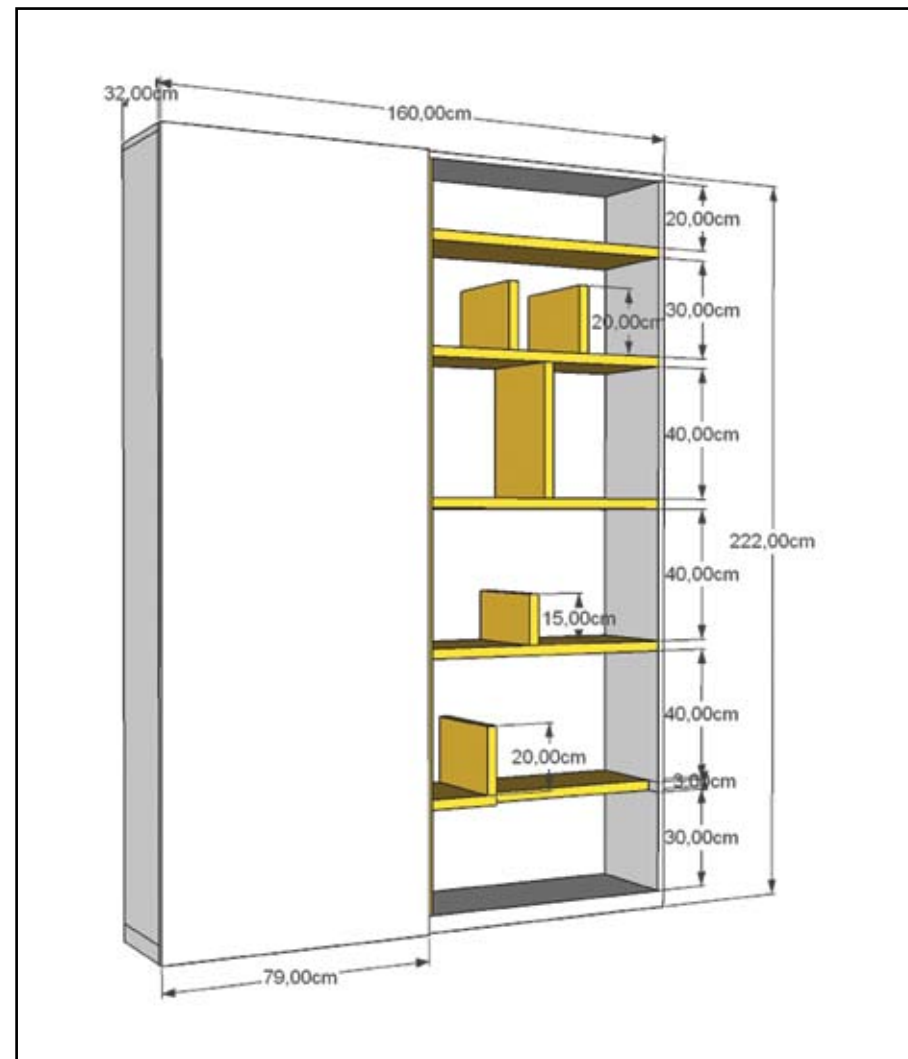
ORMAR - HODNIK 1



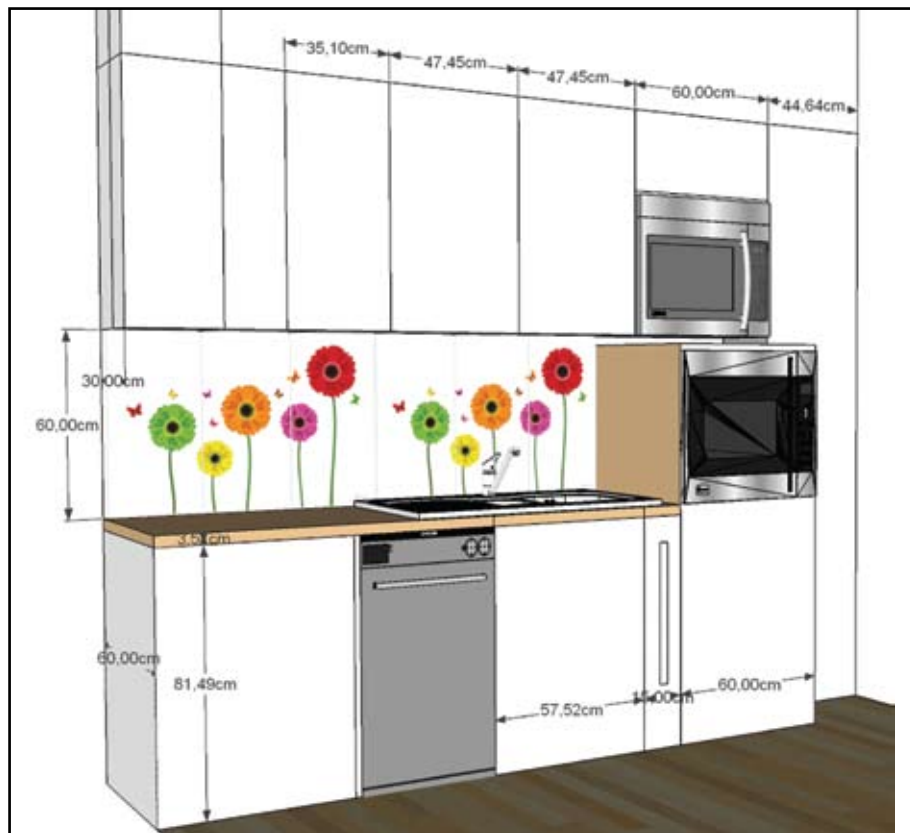
ORMAR - HODNIK 2



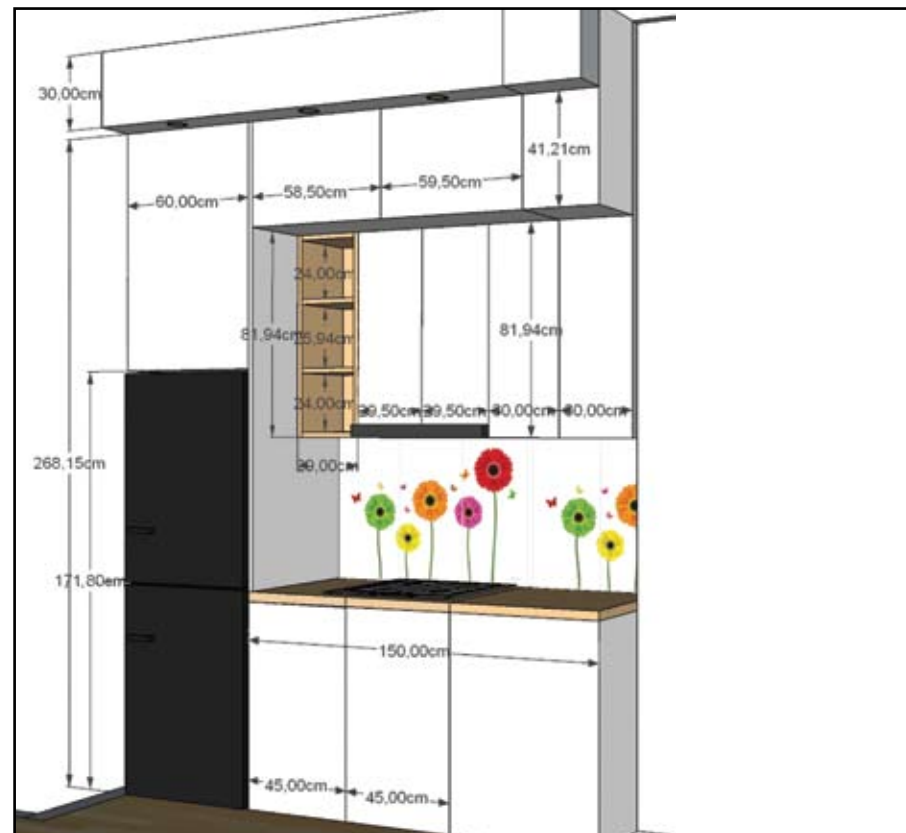
ORMAR - SPAVAĆA SOBA



ORMAR - DJEČJA SOBA



DESNI DIO

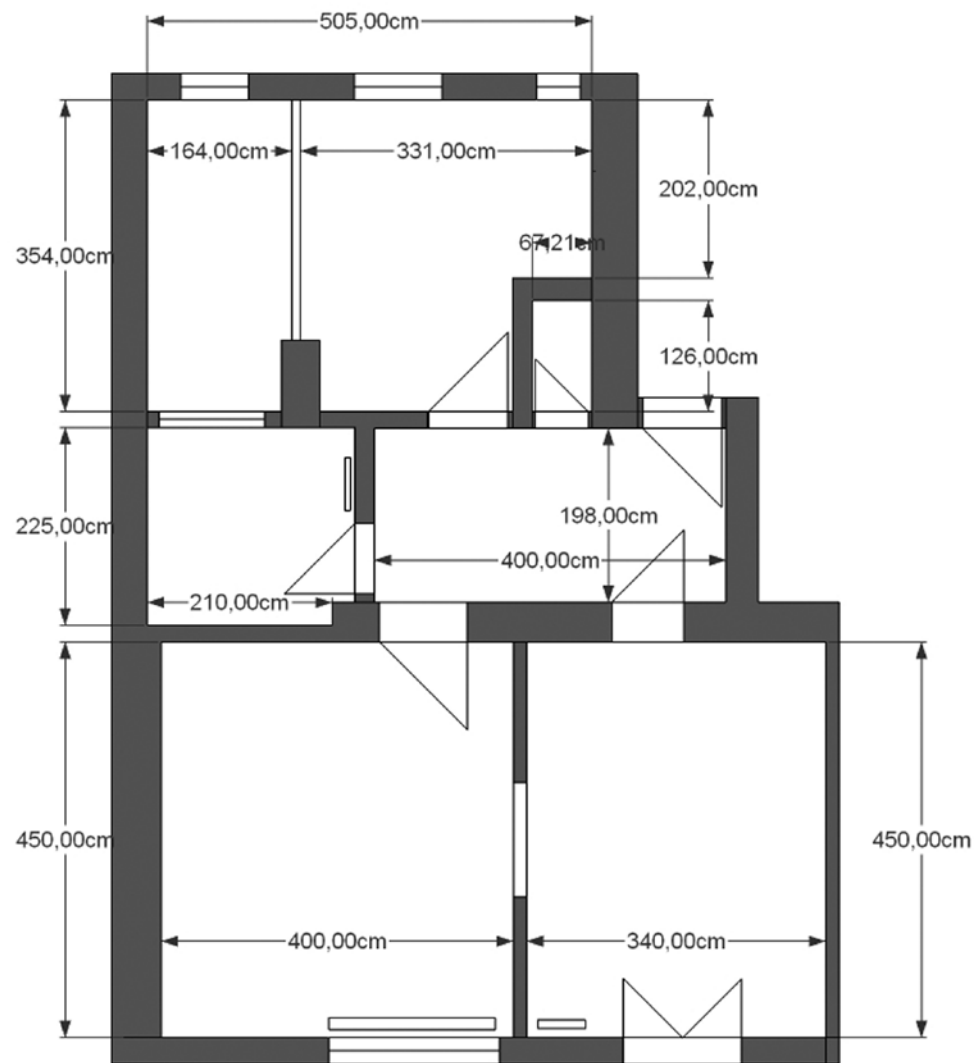


LIJEVI DIO

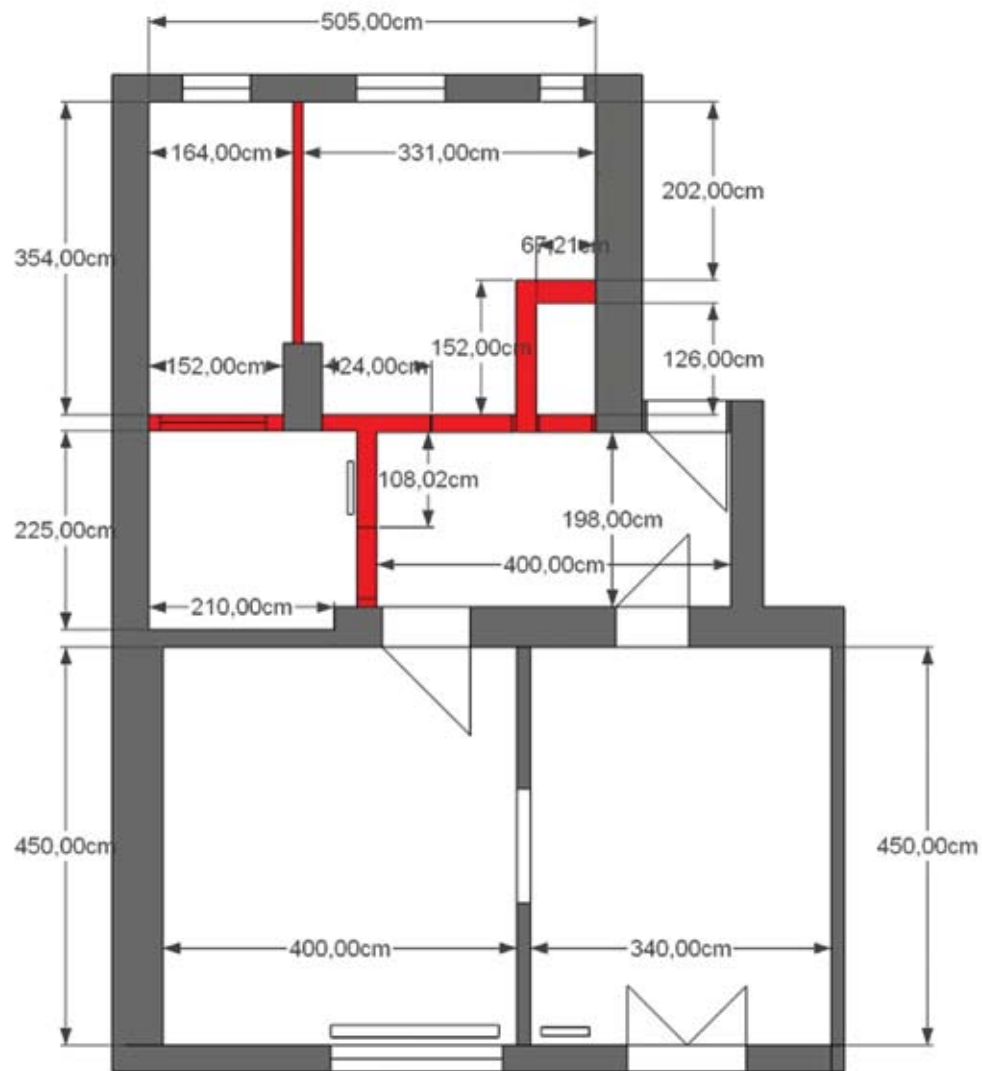
KUHINJA

2

TLOCRTI

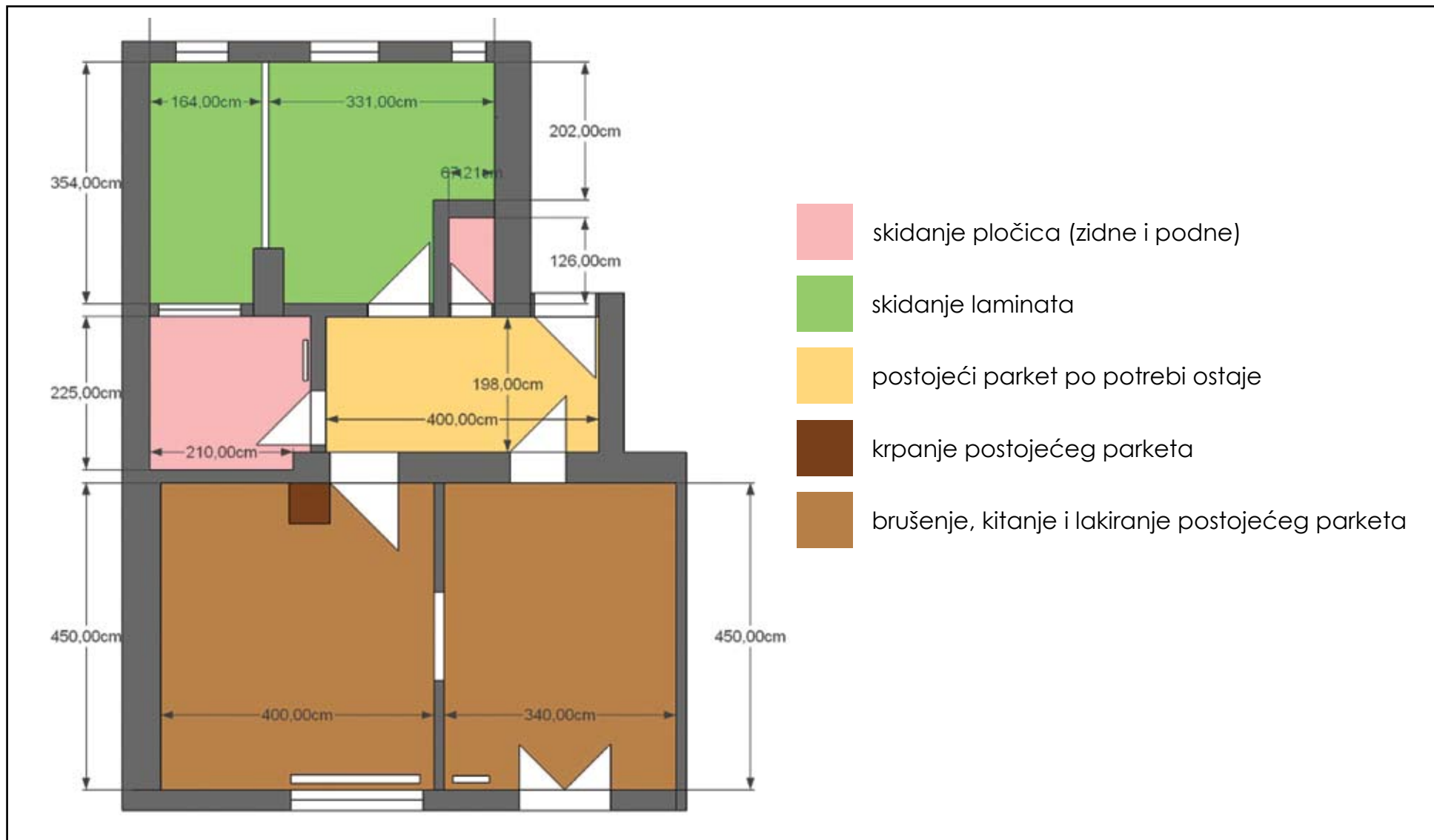


POSTOJEĆE STANJE

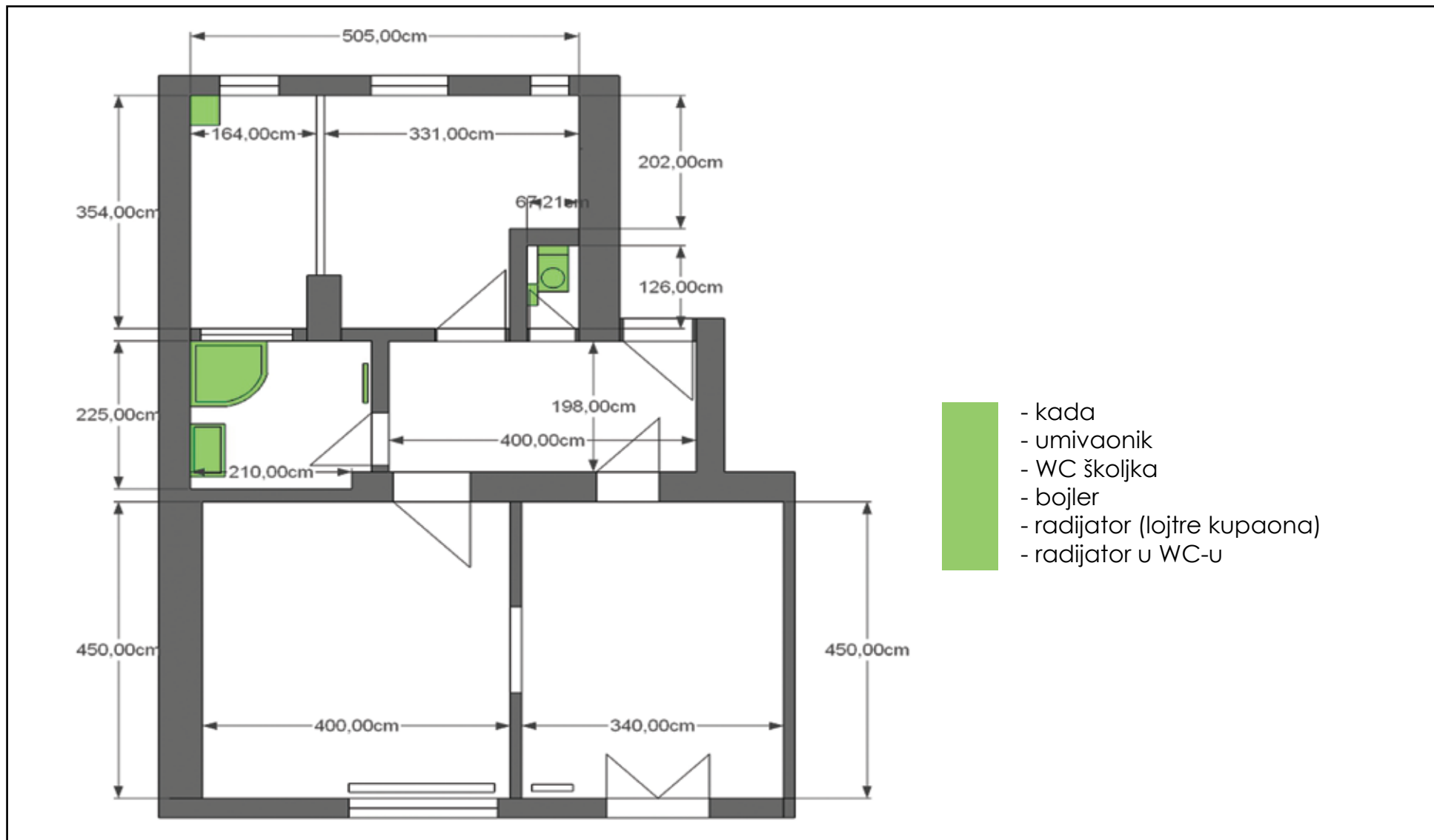


 zidovi koji se ruše

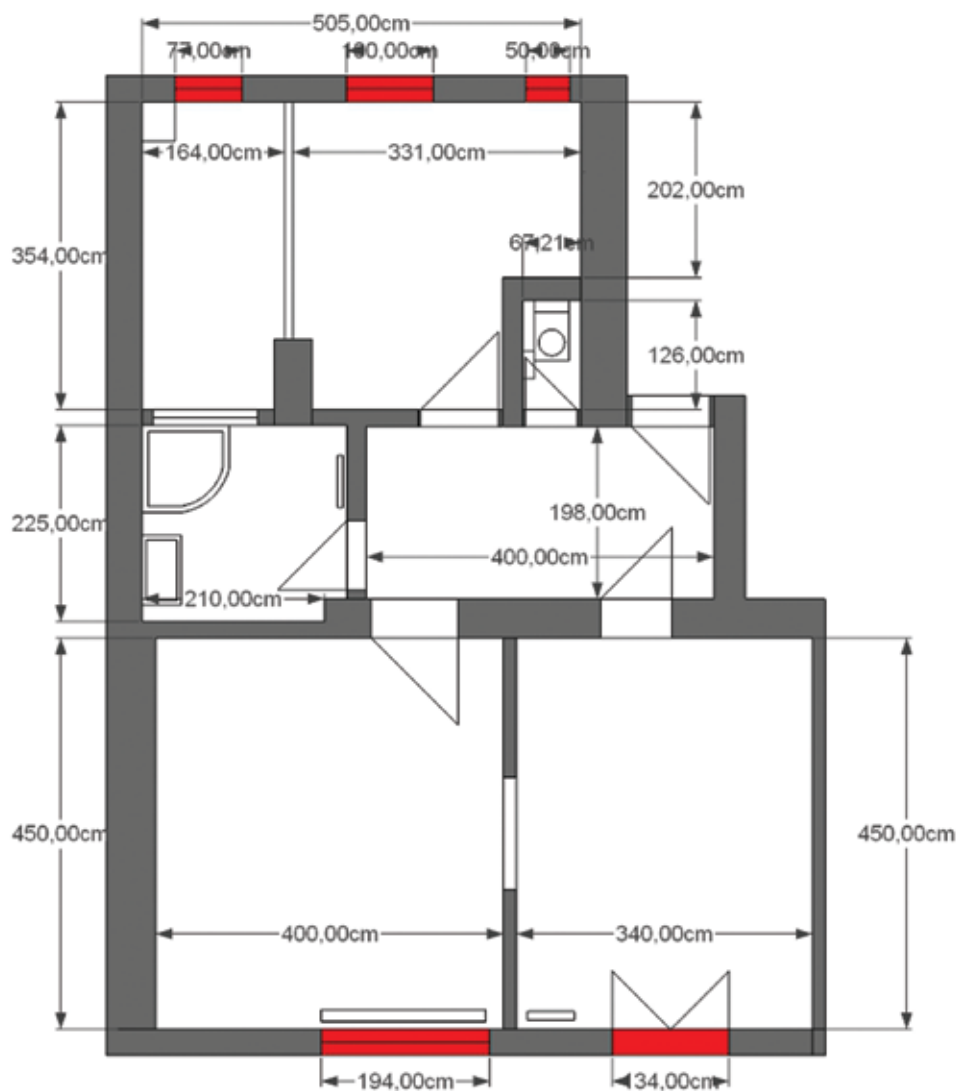
RUŠENJE



DEMONTAŽA - PODOVI



DEMONTAŽA - SANITARIJE

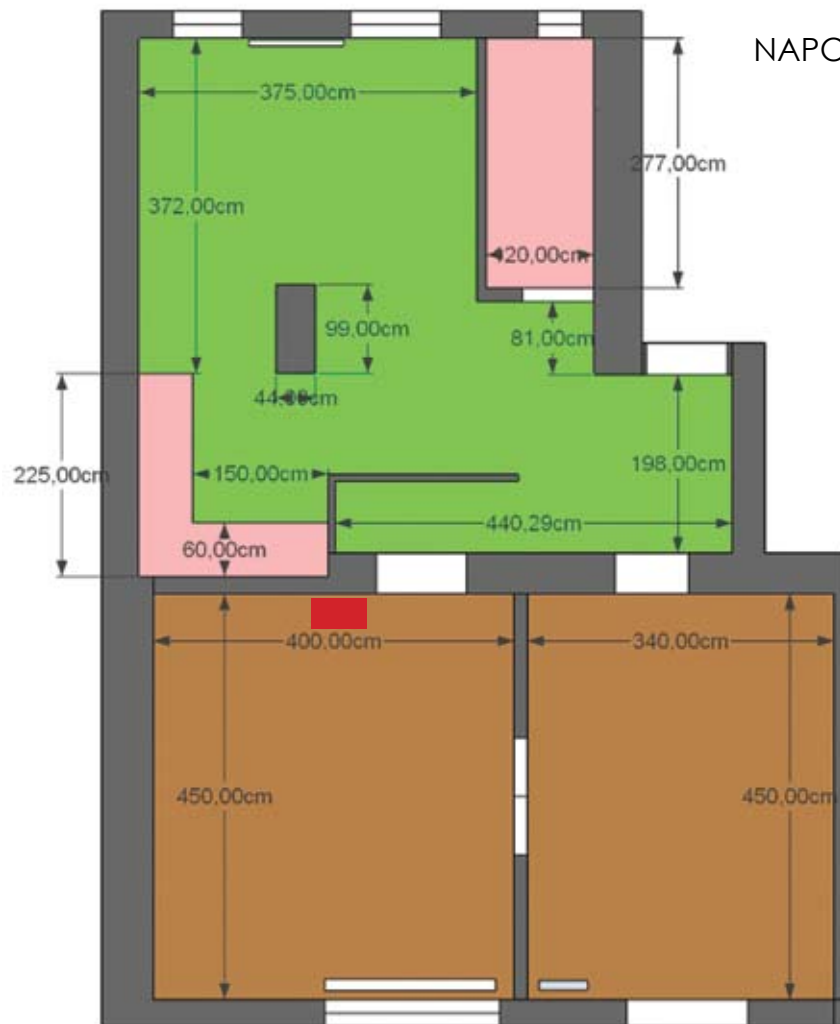


- balkonska vrata kuhinja
- prozor kuhinja
- prozor dječja soba
- balkonska vrata
- prozor kuhinja - WC
- ograda balkona

DEMONTAŽA - VANJSKA STOLARIJA



IZOLACIJA ZIDA - DJEČJA SOBA



NAPOMENA: ostati će pragovi kod ulaza u sobe zbog razlike visina



pločice



ostaje postojeći parket koji se brusi, kita i lakira (samo u sobama)

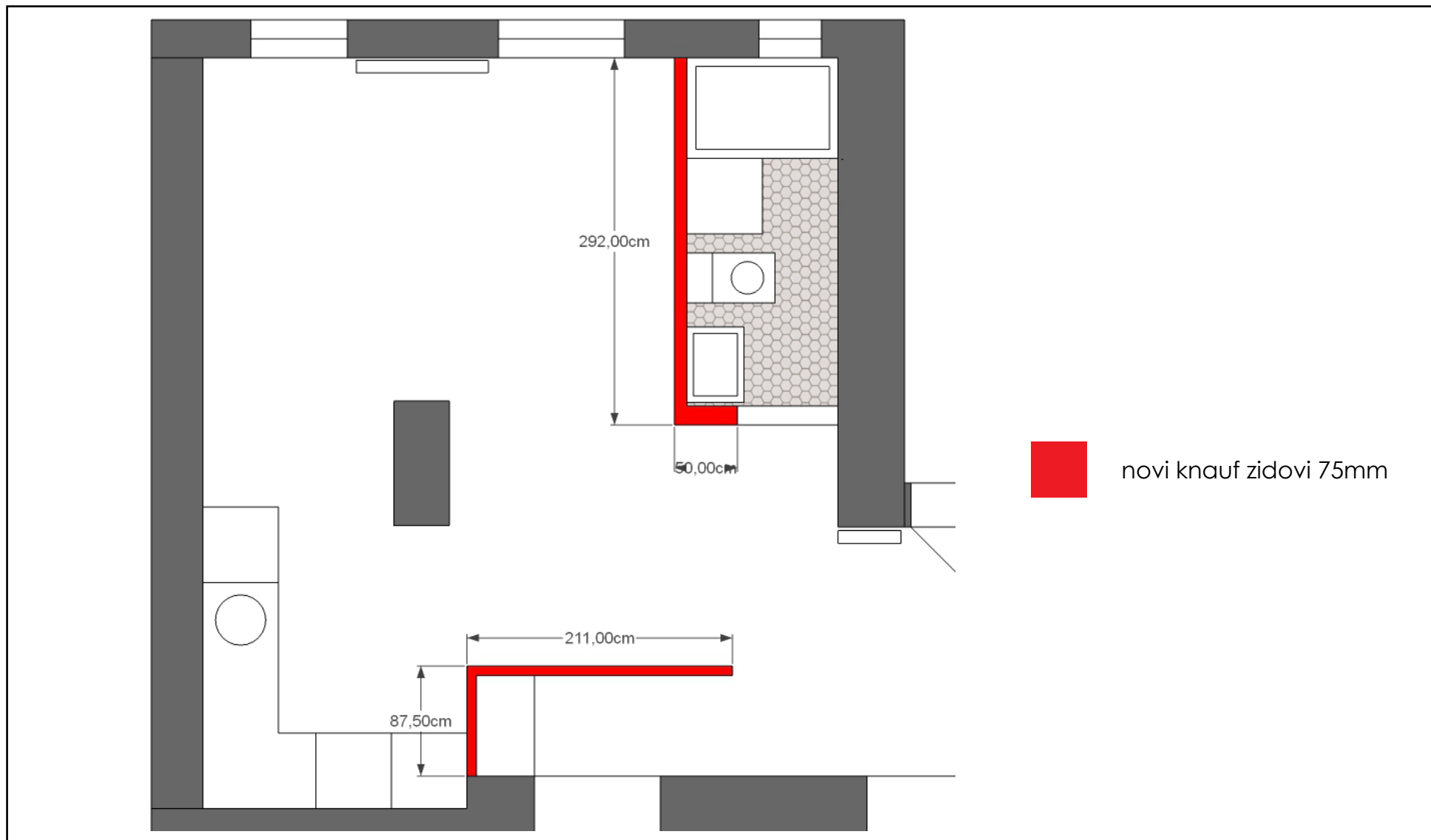


nivelacija postojećeg poda nakon skidanja laminata i pločica uz prethodno kranje svih podnih kanala i postavljanje novog laminata

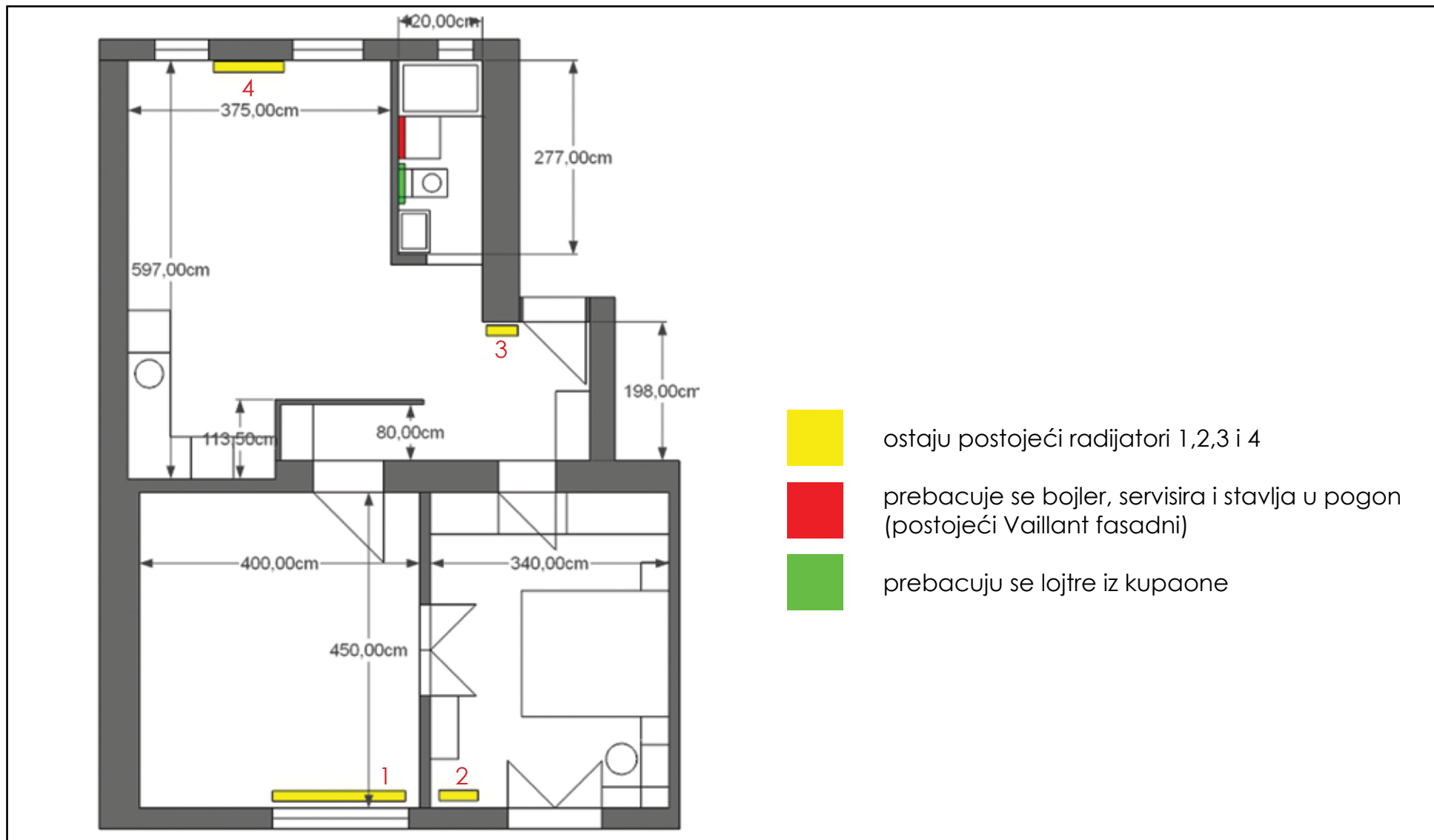


kranje postojećeg parketa cca 1m²

NOVI PODOVI



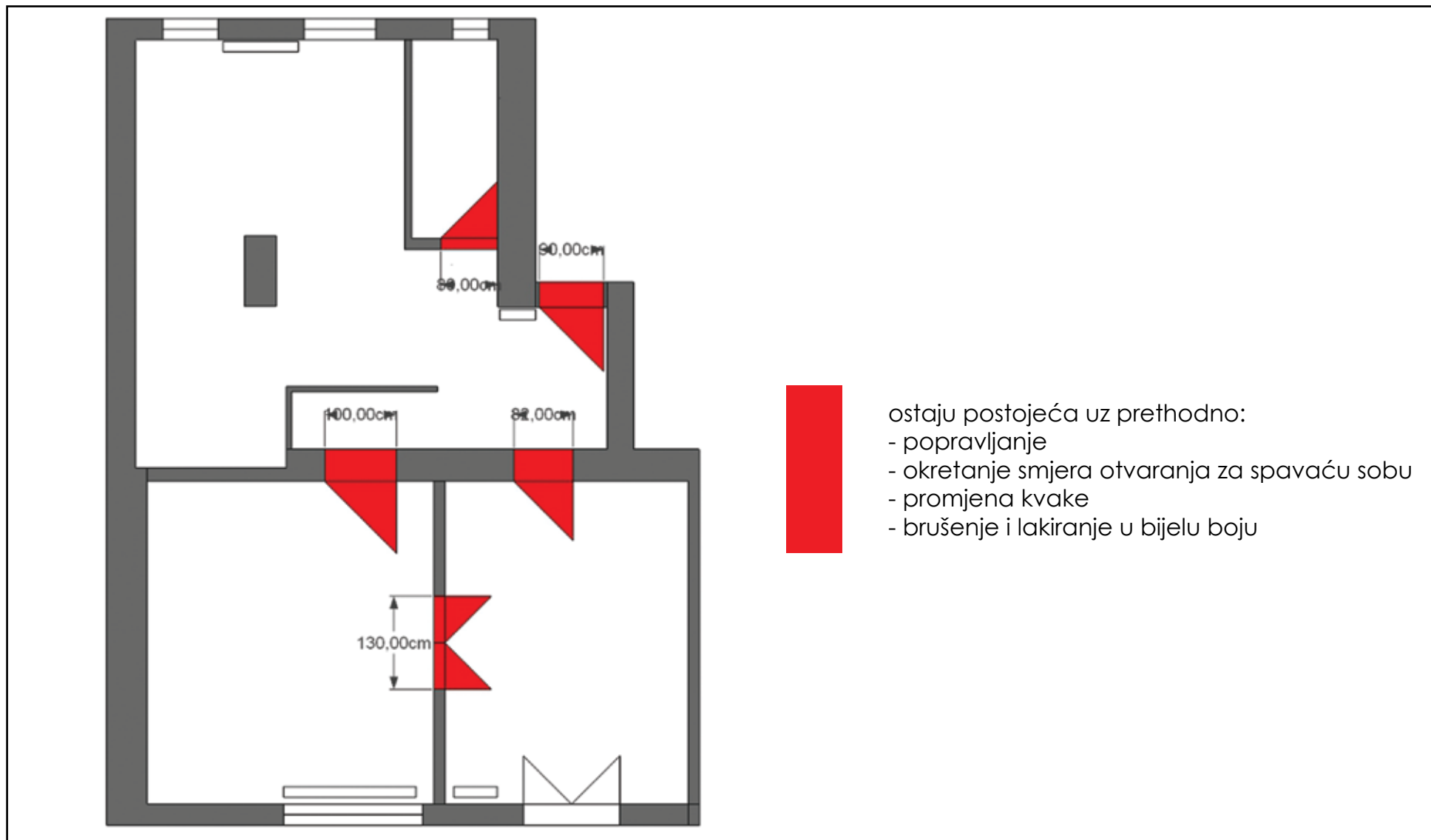
NOVI ZIDOVI



RADIJATOR - BOJLER

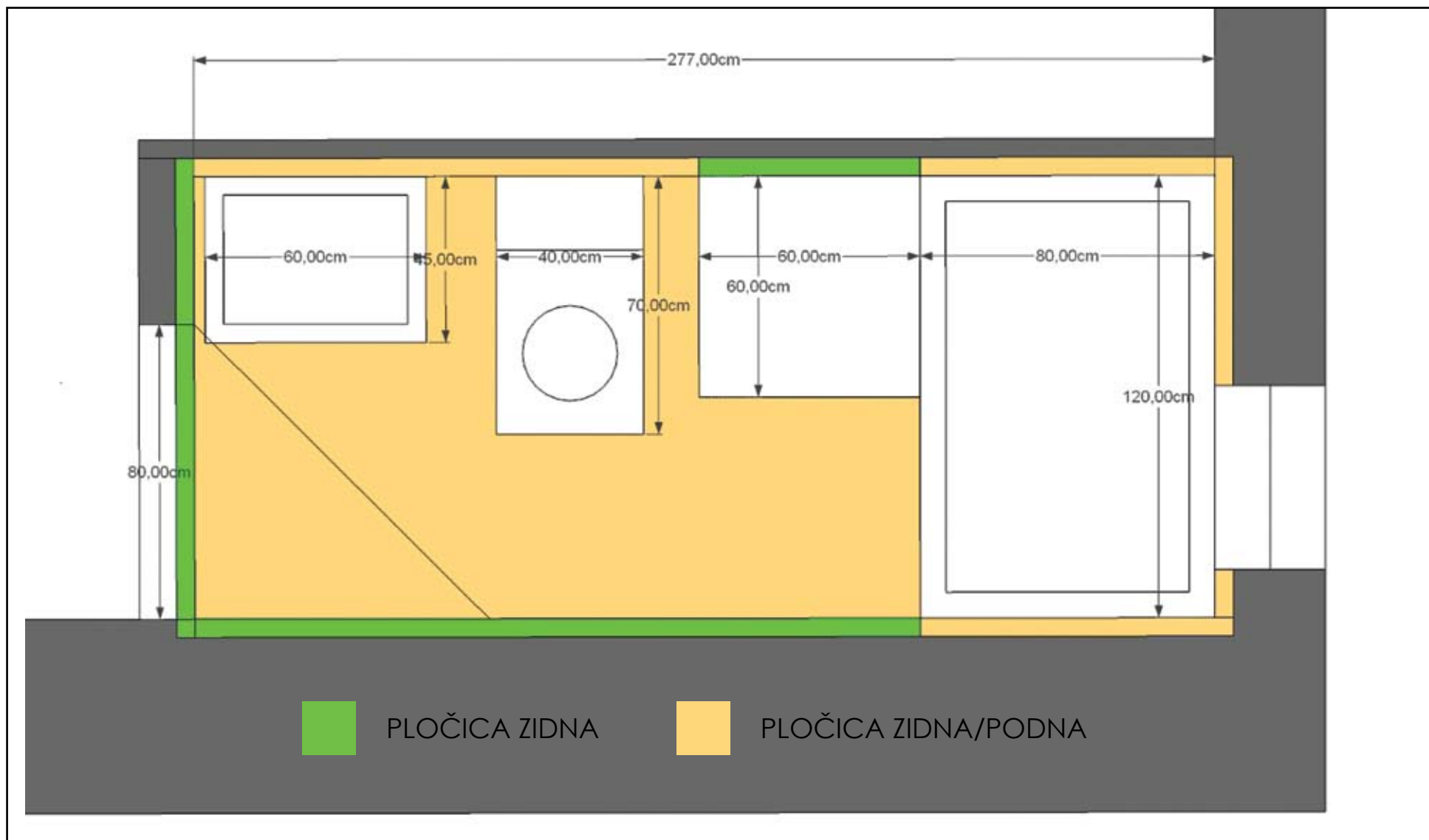


SPUŠTENI STROP

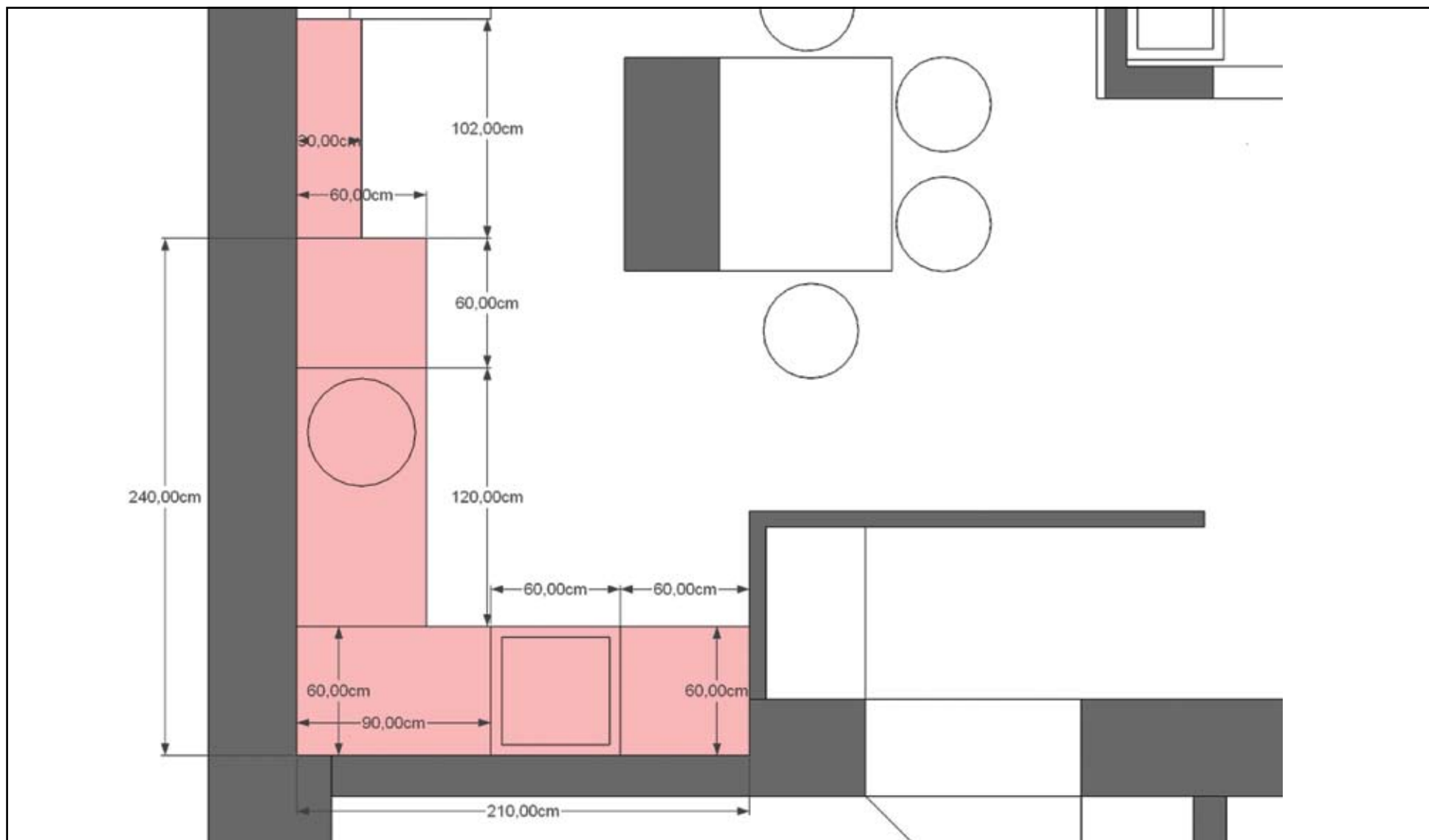


- ostaju postojeća uz prethodno:
- popravljjanje
 - okretanje smjera otvaranja za spavaću sobu
 - promjena kvake
 - brušenje i lakiranje u bijelu boju

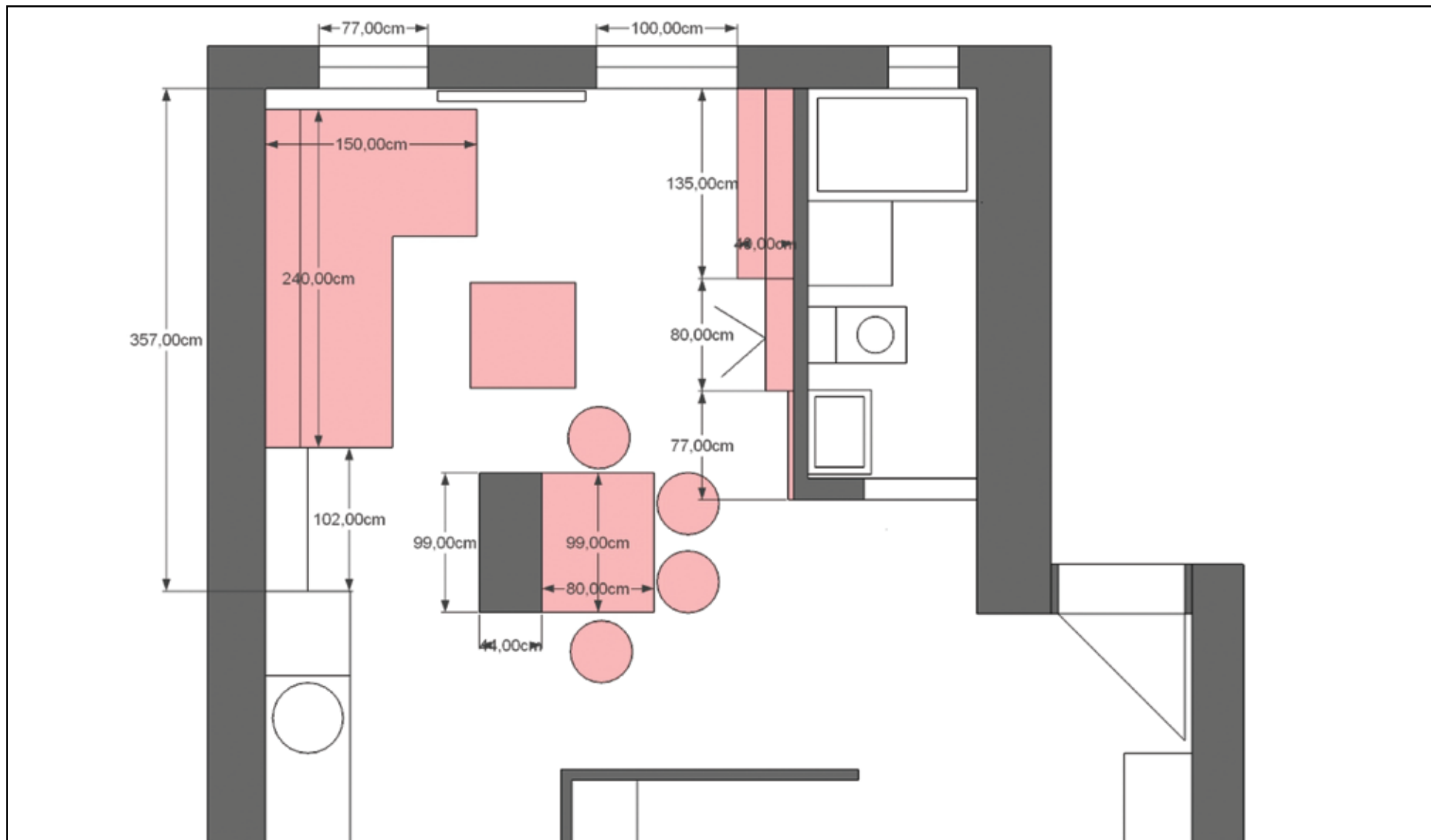
UNUTARNJA VRATA



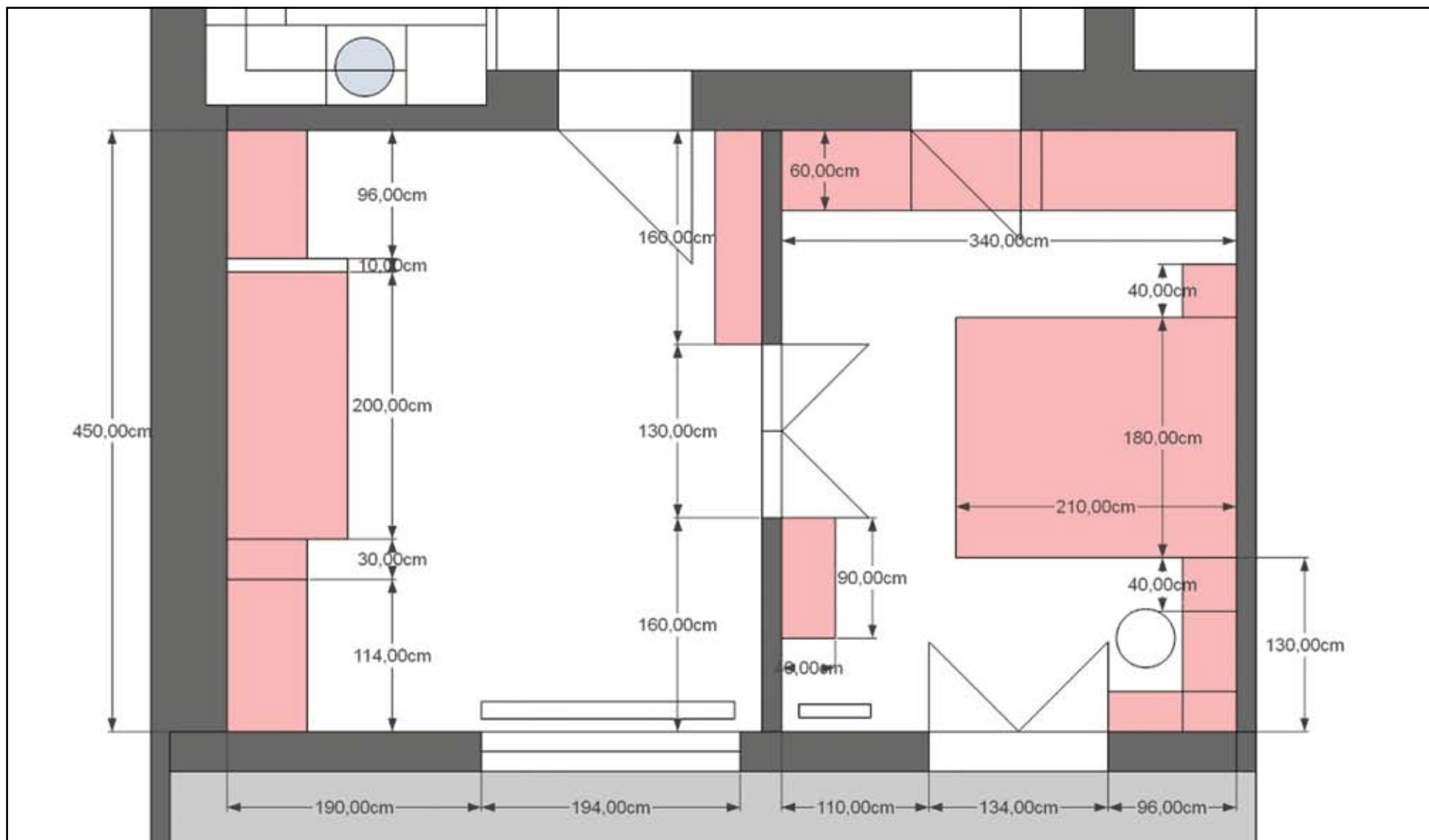
KUPAONA



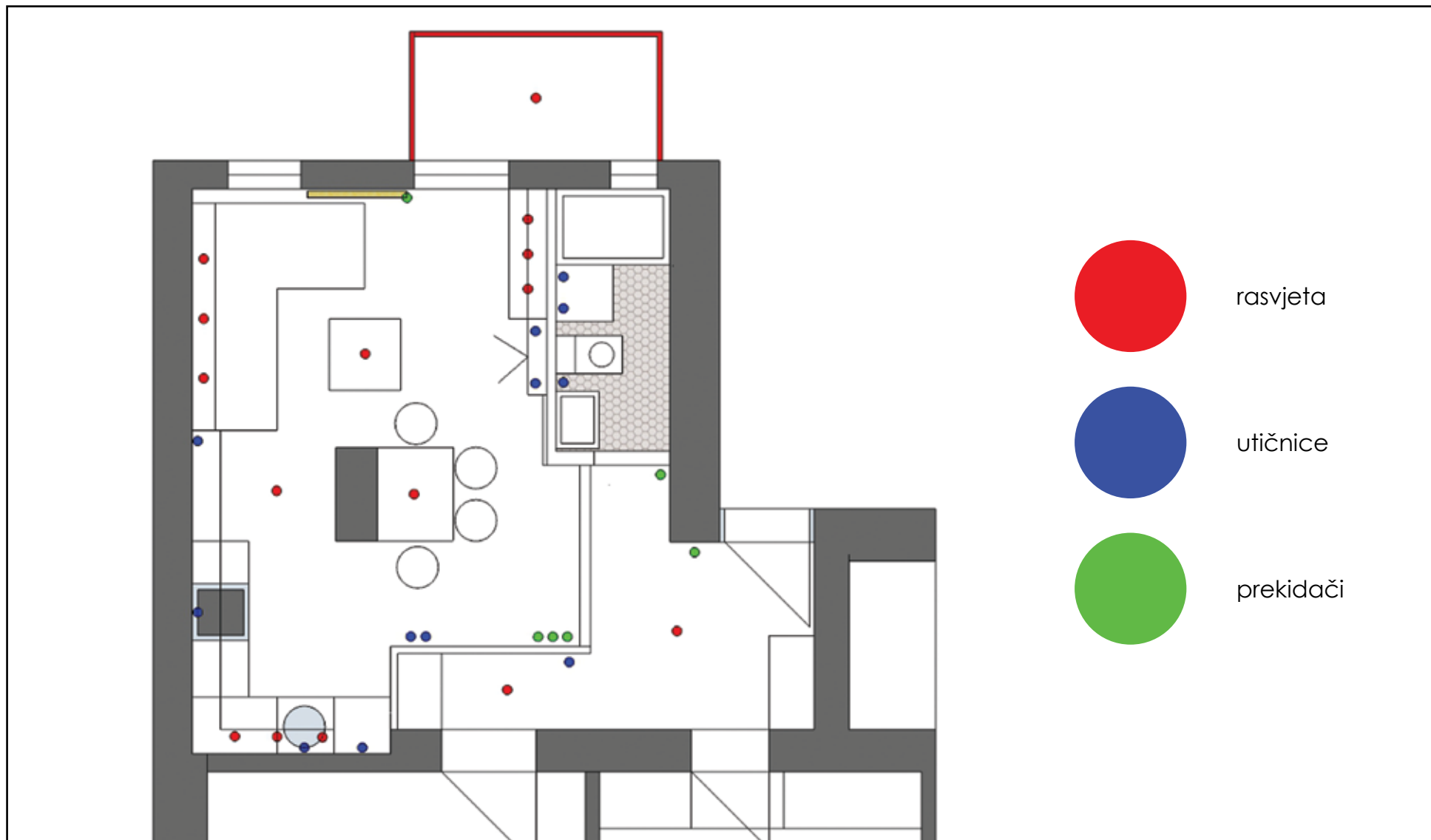
IDEJNO RJEŠENJE - KUHINJA



IDEJNO RJEŠENJE - DNEVNI BORAVAK



IDEJNO RJEŠENJE - SOBE



SHEMA RASVJETE

3

POSTOJEĆE STANJE



HODNIK



HODNIK



KUPAONA - WC



BLAGOVAONA



BLAGOVAONA



KUHINJA



SOBA 1



SOBA 2

